



# Civil and Construction Automation Solution



Structure, settlement, displacement, inclination, stress and strain monitoring automatic solution



# Company Profile

ZHYQ is based in Melbourne, Australia, specializes in sensor technology and product design, development, sales and technical support to build and ensure high reliability and timely customized solutions for customers. With the advantage of having our own production facilities in China, we aim to serve international customers from more than 50 countries with reliable technology and excellent service.

## Our product range includes:

Sensors and transmitters for measuring pressure, weight, force and weighing.

Sensors and transmitters for pressure, differential, temperature and concentration measurements. Structural health monitoring and highway weighing systems for Bridges, subways and tunnels Industry 4.0 wireless sensor network systems.

## About Our Manufacturer

Shanghai Zhaohui Pressure Apparatus Co., Ltd. (ZHYQ) is our leading professional manufacturer in the industrial of pressure, flow, temperature, liquid level and Internet of Things (IoT). ZHYQ found in 1999. We are an ISO9001 (2015) Quality management certificated company, we acquired the certificates of CMC, Ex, MA, CE, RoHS and more. We are qualified for 7 Invention patents and more than 70 utility model patent technologies.



# Why choose ZHYQ ?



Expert technical advice from our highly experienced and trained staff



15,000m<sup>2</sup> plant, annual output 200,000 pieces transmitters



Nearly 60 national invention patents and utility model patents



ISO 9001: 2015 accredited quality systems



CMC, Ex, MA, CE, RoHS, ATEX, SIL certification



High-tech enterprises, Shanghai "specialized special new" enterprises



The first in the industry to obtain a high-range 500MPa metering license



Efficient and complete production line of monocrystalline silicon sensor




# Industrial Application

Applied in civil engineering construction, railway, road, water conservancy and other engineering fields of quality acceptance and later operation of the whole life cycle process.

Engineering detection technology refers to the use of automatic acquisition equipment to test the strain, stress, deformation and other structural parameters embedded or installed on the structure in the construction process or the operation of the structure. Evaluate the construction quality and safety of the structure or the operation status of the structure to ensure the quality and safe operation of the structure.

APPLICATION

# Catalog

- 
- 01**  
Monocrystalline Silicon Hydro Leveling Sensor
  - 03**  
Biaxial inclination sensor
  - 05**  
Wireless inclination sensor
  - 07**  
Osmometer
  - 09**  
Crack Meter
  - 11**  
Displacement Sensor
  - 13**  
Pre-tightening Sensor
  - 15**  
Data Acquisition System
  - 16**  
Software Platform

# Monocrystalline Silicon Hydro Leveling Sensor PT124B-226E

## Product Information:

Monocrystalline silicon hydro leveling sensor is an important ground-level detecting sensor in the static leveling ritual monitoring engineering settlement system; Static leveling system is a precision instrument which can measure the change of liquid level settlement relative to liquid level height between two or more points. Static leveling system is generally installed on the base platform of the height of the measured object, usually using modular automatic measurement unit to collect data, through wired or wireless communication and computer connection, so as to realize automatic observation.



### Feature:

- MEMS monocrystalline silicon technology;
- High accuracy and repeatability;
- Strong anti-jamming performance, automatic temperature compensation;
- IP66 protective, quickly suitable for various conditions;
- Independent IP, no need system;
- Standard interface, no need system calibration;

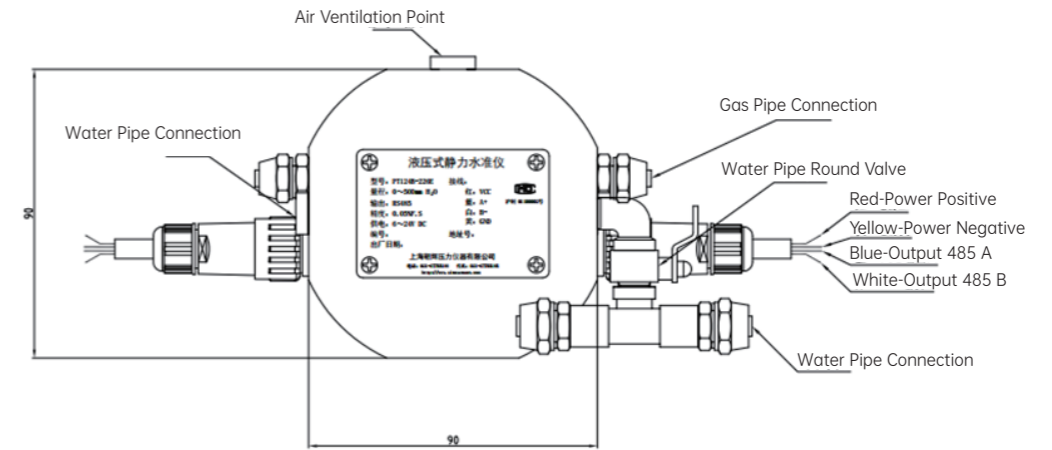
### Application:

- Dam;
- Nuclear power station;
- High-rise building;
- Tunnel;
- Bridge;
- Underground Construction;
- Geological settlement;

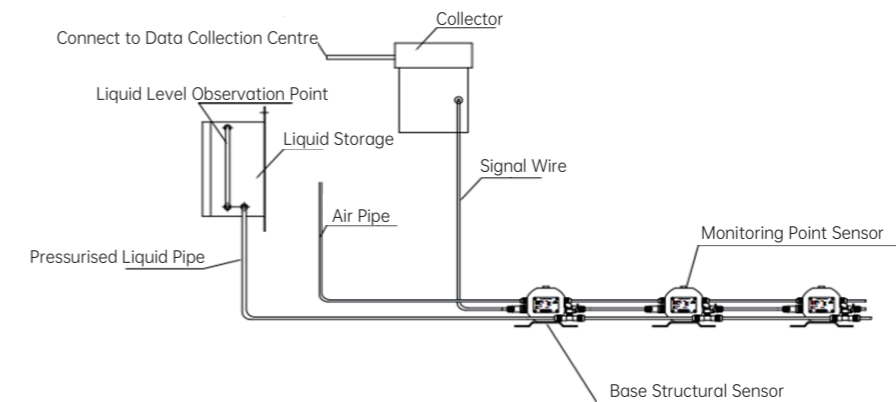
## Product Information:

Model:	PT124B-226E
Measuring Range:	0 ~ 500mmH2O; 0 ~ 1000mmH2O; 0 ~ 1500mmH2O; 0 ~ 2500mmH2O;
Output Signal:	RS485
Accuracy:	0.05%F.S
Input:	9 ~ 24V DC
Protection:	IP67
Pressure Medium:	water, anti-freezing solution, Silicone Oil
Connection:	Water Proof 4 Pin Plug

# Monocrystalline Silicon Hydro Leveling Sensor PT124B-226E



Monocrystalline Silicon Hydro Leveling Sensor is consisted by data collector, fundamental static level and monitoring point static level, through the level of the installation frame, data transmission cable, liquid pipe and fixed accessories, dry pipe and liquid composition. Installation methods can be divided into two types: flat installation of pier and wall side installation, which are selected according to site conditions and design requirements.



# Biaxial inclination sensor

## PT124B-QJ

### Product Information:

Biaxial inclination sensor is a high precision instrument invented by ZHYQ. The measuring range can reach  $\pm 90^\circ$ . The sensor will be switched to sleeping mode when not working for power saving. It can then switch back to working mode remotely.



#### Feature:

- High precision biaxial;
- Great temperature stability;
- Suitable for long-term outdoor monitoring;
- Aluminium alloy casing;
- Protection grade IP67;

#### Application:

- Geological measurement;
- Tunnel monitor;
- Building monitor;
- Composite pipe work;
- Subway construction;
- Wind tower and signal tower monitor;

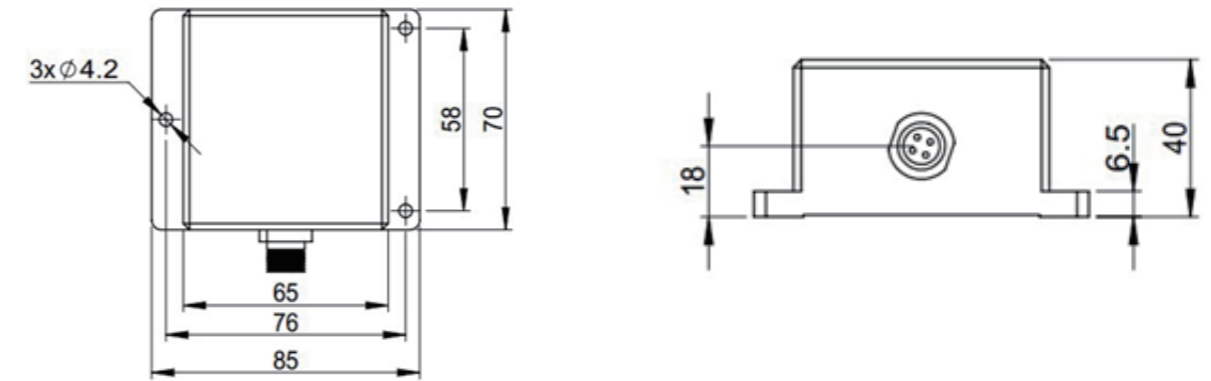
### Product Information:

Model:	PT124B-QJ		
Measuring Range:	$\pm 30^\circ$		
Resolution:	0.001		
Accuracy:	$0.005@0^\circ \sim \pm 3^\circ$	$0.01@ \pm 3^\circ \sim \pm 6^\circ$	$0.02@ \pm 6^\circ \sim \pm 15^\circ$
Cross-axis Accuracy:	$\pm 1\%$		
Zero temperature drift:	$\pm 0.002^\circ/\text{C}$		
Refresh Time:	30ms		
Initial starting Speed:	0.5ms		
Zero Accuracy:	$\pm 0.05$		
Input:	24VDC (8~36VDC)		
Quiescent Operation Current:	20mA		
Working Temperature:	$-40 \sim 85^\circ\text{C}$		

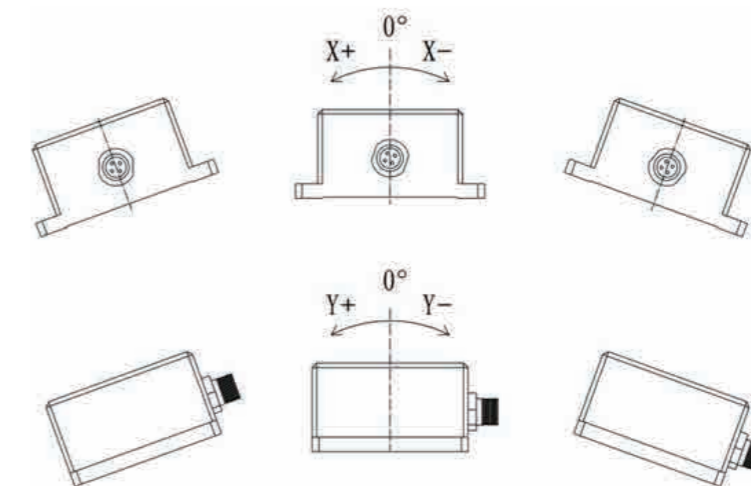
# Biaxial inclination sensor

## PT124B-QJ

### Size:



### Operating Principle:



# Wireless inclination sensor

PT124B-WXQJ

## Product Information:

Wireless inclination sensor is a high precision instrument based on NB-IoT wireless technology. The measuring range can reach  $\pm 90^\circ$ . The alarm function from this sensor can help the system monitoring the whole project easily.



### Feature:

LoRa, NB-IoT wireless communication;  
Multiple working mode option;  
Low power consumption, long working hours;

### Application:

Angle Measurement;  
Level Adjustment;  
Zero Adjustment;  
Safety Control;  
Monitoring;  
Alarm;  
Initial position control;  
Dip attitude recorder;

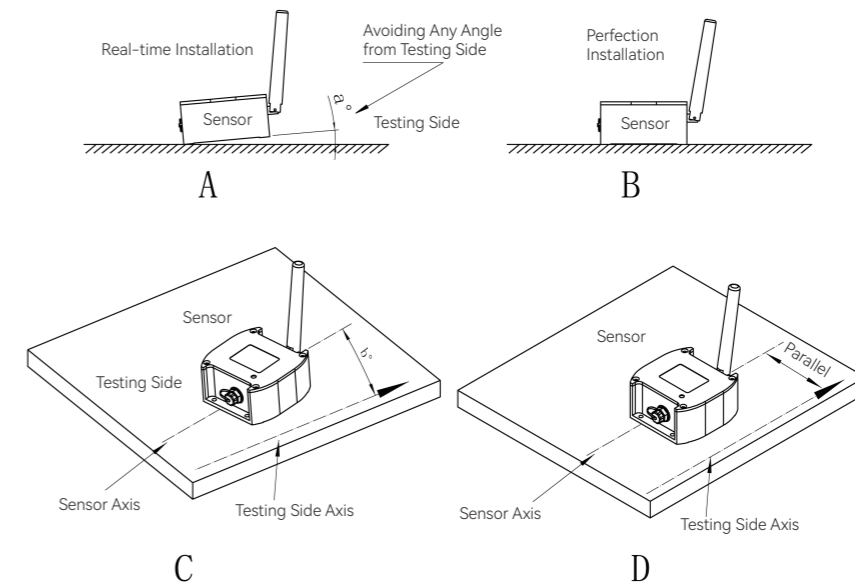
## Product Information:

Model:	PT124B-WXQJ
Input:	Internal power supply (3.6V C-type lithium sub-battery)
Quiescent Operation Current:	3.6V internal battery powered, with LoRa module, non-sleep, no wireless signal transmission
Sleep Mode Current:	3.6V internal battery power, the product works in Normal or AutoSmp mode, and is in hibernation state, no wireless data transmission
Peak Current:	3.6V internal battery powered, LoRa module in node mode, low power saving, high speed
Working Temperature:	Excluding battery -40, including ordinary button lithium battery -20
Measuring Range:	X-axis, Y-axis ( $\pm 15^\circ$ )
Resolution:	0.001
Accuracy:	$0 \sim \pm 15^\circ$
Cross-axis Accuracy:	$\pm 1\%$
Zero temperature drift:	$\pm 0.002$
Size:	85x85x42mm

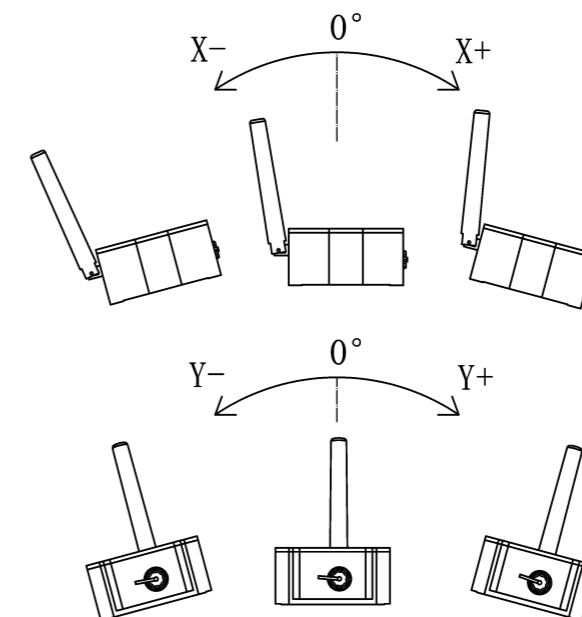
# Wireless inclination sensor

PT124B-WXQJ

## Installation Instruction :



## Operating Principle :



# Osmometer

## PT124B-227

### Product Information:

Osmometer comes with wireless Transmission mode. It adopts superb encapsulation technology and perfect assembly process to make sure the products of long-term work under high stability without leakage. The sand control cap in front provides great protection for the sensor behind. The vent tube is connected with testing medium by polymer isolation plug.



#### Feature:

- Wireless NB-IoT communication optional;
- Can work under varies extreme weather condition;
- Protection grade IP68;
- Varies signal output to choose;
- Anticorrosion, moisture proof and leakage proof;

#### Application:

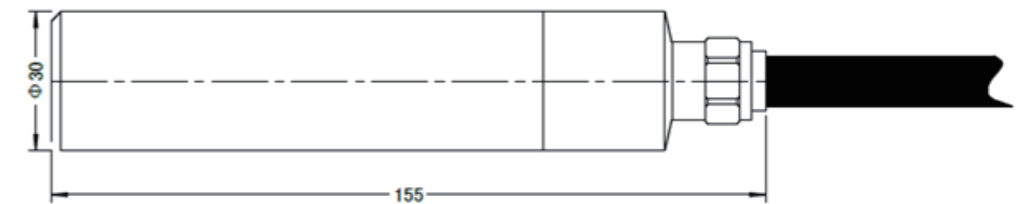
- Building Automation;
- Metallurgical;
- Mechanical;
- Environmental Protection;
- Technical Performance Medical;
- Petrochemical Pipeline Pressure Measurement;
- Automatic Control and Test System;

### Product Information:

Model:	PT124B-227
Measuring Range:	0~1mH <sup>2</sup> O~50mH <sup>2</sup> O
Accuracy:	0.25%FS; 0.5%FS
Nonlinearity:	0.2% of Full Measuring Range
Stability:	0.2%FS/year
Output Signal:	RS485, NB-IOT
Input:	24(12~36)VDC (Amplified Signal)
Working Temperature:	0~85°C
Compensation Temperature:	0~65°C
Overload:	150%FS
Material:	304, 316 Stainless Steel
Connection:	Ventilation cable (F4 casing with strong corrosion resistance)

# Osmometer

## PT124B-227



### Size:

Electric Connection	RS485
	Blue 485 +
	Red Power +
	White 485 -
	Yellow Power -

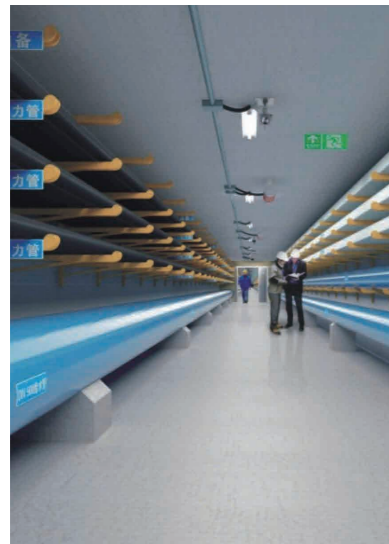
### Installation:

# Crack Meter

## PT124B-LF

### Product Information:

High precision wear-resistant linear resistance is used as the core component of PT124B-LF Crack Meter. The main body is a strip linear resistor and the moving part is a metal conductor with low resistivity. Displacement is measured by measuring the position of the metal conductor on the linear resistor.



#### Feature:

- Small size and easy installation;
- Single unit, no separate parts;
- No additional data converter needed;
- Easy maintenance;

#### Application:

The crack meter is used to measure displacement of building, tunnel, subway, wind tower and signal tower constructions and maintenances.

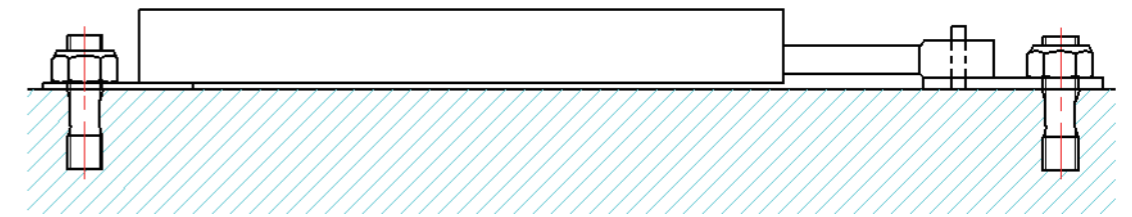
### Product Information:

Model:	PT124B-LF
Measuring Range:	0-25/50mm
Baud Rate:	9600
Accuracy:	0.2mm
Output Signal:	RS485
Working Temperature:	-20~60°C
Connection:	Water Proof 4 Pin Plug
Initial Starting Time:	0.5s
Protection Grade:	IP67
Zero temperature drift:	±0.002°/°C
Input:	9-16V DC

# Crack Meter

## PT124B-LF

### Installation





# Displacement Sensor

PT124B-WY

## Product Information:

Displacement Sensor is supported by RS485 signal output. The sensor has built-in digital acquisition and conversion circuit which compensate the non-linear error. It contains built-in spring and automatic reset. Its low power consumption, high reliability and accuracy is suitable for environments requiring battery power supply. The sensor also supports wireless NB-IoT data transfer.



### Feature:

- Can work under varies extreme weather condition;
- Double Protecting Casing;
- Easy installation and maintenance;
- Protection grade IP67;
- Anti-surge, anti rf, anti-electromagnetic interference;
- Varies signal output to choose;

### Application:

The crack meter is used to measure displacement of building, tunnel, subway, wind tower and signal tower constructions and maintenances.

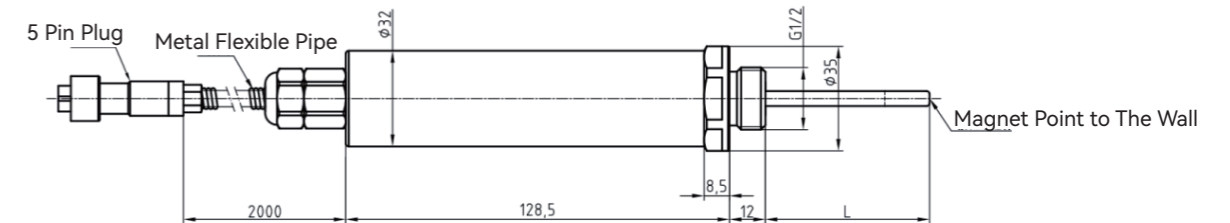
## 参数规格 :

Model:	PT124B-WY
Measuring Range:	20ns(PPS)
Accuracy:	-142DBm
Communication:	515 m/s
Output Signal:	RS485
Input:	9-16V DC
Sleep Mode Current:	-40~85°C
Working Temperature:	18288m
Store Temperature:	0.5s
Data Transfer Time:	Flat 3mm, Height 6mm
Protection Grade:	IP67

# Displacement Sensor

PT124B-WY

## Installation:



## Connection:

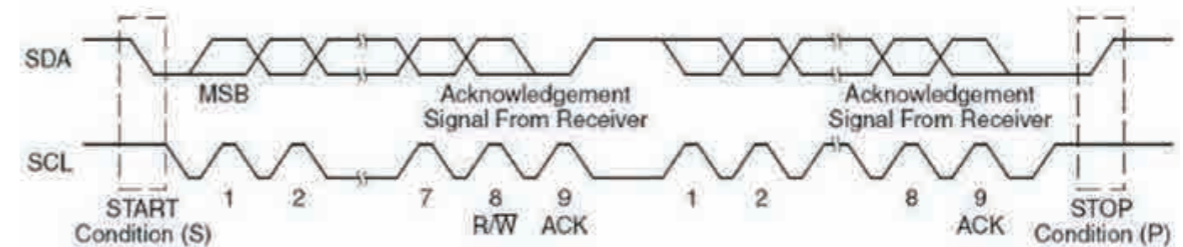
### Connection Method

- 1.VCC;
- 2.SCL;
- 3.SDA;
- 4.GND;
- 5.GND;



## Description of transmitter communication protocol:

On the basis of THE I2C protocol, the transmitter is normally in hibernation state. When the transmitter data is read, the measurement request instruction 0xAC is sent first, and the data is read after the transmitter data conversion is completed, and then it enters the sleep state.



# Bolt Pre-tightening Force Sensor PT7001-LS

## Product Information:

Bolt pre-tightening force sensor is a single chip integrated sensor IC using planar Hall technology. It can measure the piertotum pass density parallel to the chip surface. By integrating signal processing technology, the magnetic flux density of the small magnet rotating on the chip surface (radial magnetization) can be



### Feature:

Measurement angle up to 360°;  
RS485 signal output;

### Application:

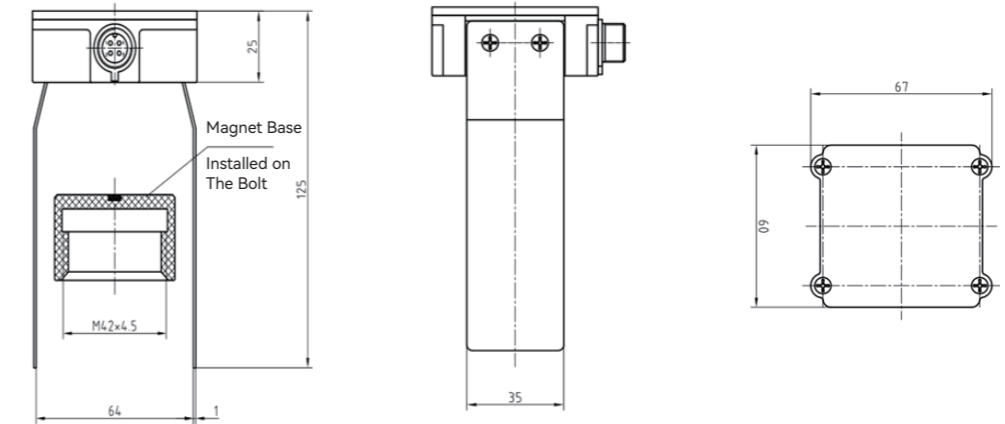
It is suitable for monitoring the loosening caused by relative displacement between bolts and nuts, such as the connection between large wind power equipment tower barrel, tower crane foundation connection fixed bolt and other large static bolt connection fixed equipment that needs to be monitored.

## Product Information:

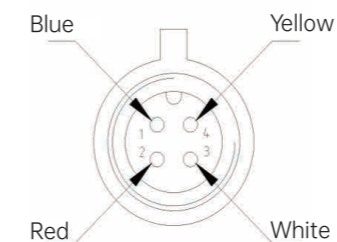
Model:	PT7001-LS
Measuring Angle:	90°~180°~360°
Angle Accuracy:	±1°
Nonlinearity::	0.2% of Full Measuring Range
Accuracy:	0.2%FS/Year
Output Signal:	RS485
Input:	24(12~36)VDC (Amplified Signal)

# Bolt Pre-tightening Force Sensor PT7001-LS

## Size :



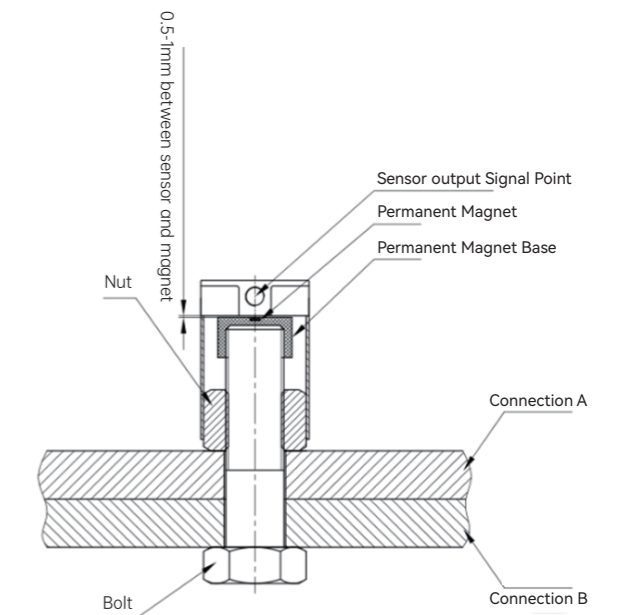
## Connection :



## Output Method :

- 1 . Blue: RS485A+
- 2 . Red: VCC
- 3 . White: RS485B-
- 4 . Yellow: GND

## Installation :



# Data Acquisition System

SDG-CJ01



## Product Information:

Data Acquisition System supports wireless GPRS. The acquisition system needs sensors that can communicate digital signals. Data acquisition supports encrypted data acquisition and transparent data acquisition. Complete collection and analysis software can meet the needs of different users. The maximum supported sensor number is 25 and maximum communication distance is 500m.

## Feature :

- Intelligently identify IP addresses;
- Actively upload data;
- Compatible with a variety of digital sensors;

## Application :

The Data Acquisition System is designed specifically for civil engineering industry. The idea is to bring the sensors together into a whole system and make the data collection process easier.

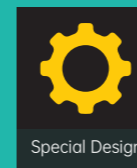
## Product Information:

Model:	SDG-CJ01
Baud Rate:	9600bps
Sensitivity:	-142DBm
Speed:	515 m/s
Output Signal:	RS485
Input:	9-16V DC
Working Temperature:	-40~85°C
Satellite position:	18288m
Initial Starting Time:	0.5s
Static:	Flat 3mm, Height 6mm
Protection Grade:	IP67
Zero temperature drift:	±0.002/°C

# AUTOMATED MONITORING ACQUISITION SOFTWARE

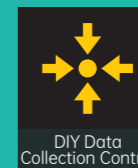
COMPREHENSIVE ACQUISITION SOFTWARE SUPPORTS ACCESS TO A VARIETY OF SENSORS. ACCORDING TO THE INSPECTION OBJECT OF PROJECT SUPERVISION, THE COMPREHENSIVE COLLECTION AND MANAGEMENT OF ALL HARDWARE EQUIPMENT IS REALIZED. THIS COLLECTION SOFTWARE SUPPORTS THE DISPLAY AND ANALYSIS OF DATA AND SYNCHRONIZES THE COLLECTED DATA TO THE CLOUD PLATFORM FOR DISPLAY ON THE PLATFORM.

## Software Features



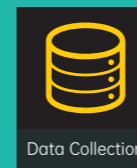
Special Design

Numbers of sensors and data acquisition instruments were designed by different project conditions. All initial data settings can be set as project required.



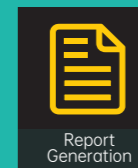
DIY Data Collection Control

Sensors can be selected individually for data collection test. Test can be set for one target in any collection time period.



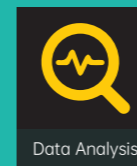
Data Collection

All collected data will be saved in the system for future search. Data are available from 1 day to most recent month.



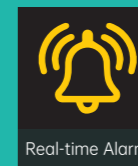
Report Generation

Report can be generated from any time period in .xls form. It is convenient for data analysis and test conclusion.



Data Analysis

Graphical analysis option is available in the system for any data selection.



Real-time Alarm

Alarm can be set by operators for real-time sensor faulty warning.

请选择查看的设备

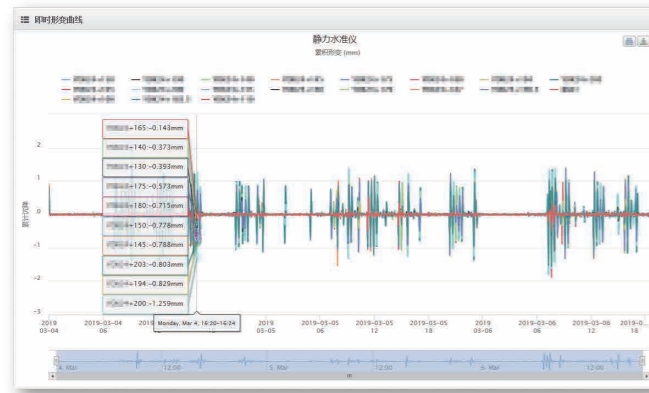
类型: 本车位 | 线路: 1线 | 车站: 请选择 | 确定

设备名称	设备编号	设备名称	设备名称	设备名称	设备名称	设备名称	设备名称	设备名称	设备名称
2019-03-04 14:40:19.602	8A	静力水准仪	1	980.83624	17.688	-0.022	-0.043	正常	
2019-03-04 14:40:19.602	8A	静力水准仪	1	970.7674	17.750	0.022	0.043	正常	
2019-03-04 14:40:19.602	8A	静力水准仪	1	741.54886	17.812	0.142	-0.061	正常	
2019-03-04 14:40:19.602	8A	静力水准仪	1	799.1164	17.938	0.094	0.157	正常	
2019-03-04 14:40:19.602	8A	静力水准仪	1	717.88934	17.938	0.397	0.425	正常	
2019-03-04 14:40:19.602	8A	静力水准仪	1	734.49963	17.938	0.304	0.224	正常	
2019-03-04 14:40:19.602	8A	静力水准仪	1	625.1336	17.875	0.469	0.330	正常	
2019-03-04 14:40:19.602	8A	静力水准仪	1	566.1006	17.938	0.288	0.285	正常	
2019-03-04 14:40:19.602	8A	静力水准仪	1	393.25348	17.938	0.319	0.268	正常	
2019-03-04 14:40:19.602	8A	静力水准仪	1	443.67712	17.938	0.138	0.034	正常	
2019-03-04 14:40:19.602	8A	静力水准仪	1	387.00235	18.000	0.211	0.041	正常	
2019-03-04 14:40:19.602	8A	静力水准仪	1	373.1187	17.812	0.054	0.004	正常	
2019-03-04 14:40:19.602	8A	静力水准仪	1	314.1451	17.875	0.049	-0.047	正常	

System Monitoring



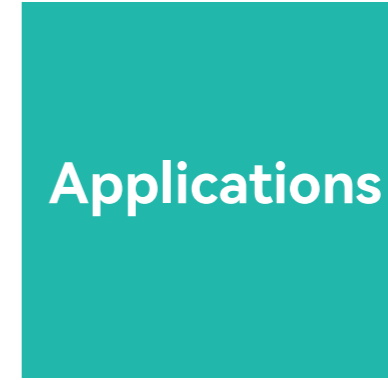
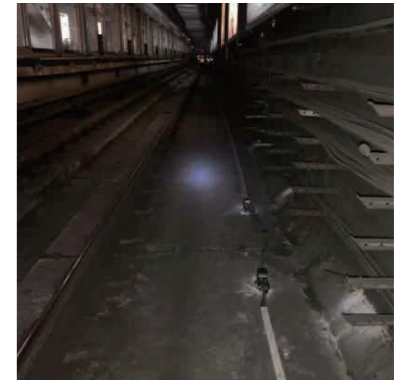
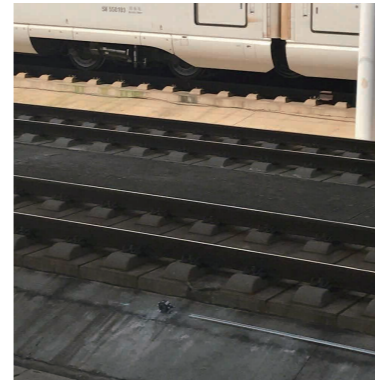
Chart View



Real-time Chart View



All-time Chart View



Applications

系统警告

设备名称	报警内容	报警时间	报警状态
静力水准仪	报警内容	报警时间	报警状态
静力水准仪	报警内容	报警时间	报警状态
静力水准仪	报警内容	报警时间	报警状态
静力水准仪	报警内容	报警时间	报警状态

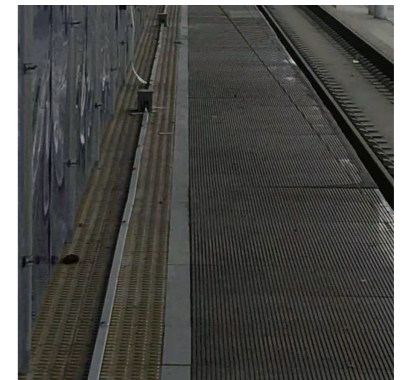
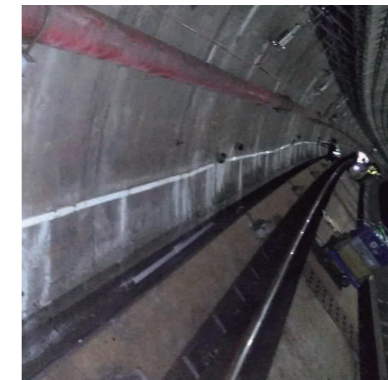
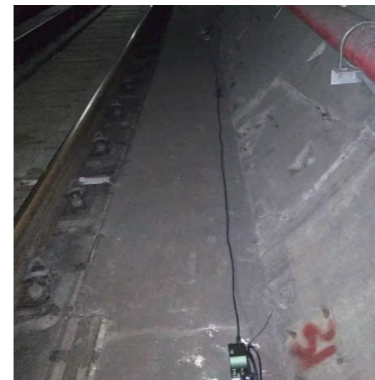
System Warning Page

报告生成

起始时间: 2019-03-01 18:30:00 结束时间: 2019-03-06 18:22:00

生成报告

Report Generation



ZHYQ IOT PTY LTD  
 Address: 25/111 Lewis Road Knoxfield VIC 3180  
 Mobile: 0433244552  
 Email: info@zhyqsensor.com.au  
 Office Operating Hour: Mon-Fri 9am-5pm